

GENERAL NEWS

Early finish on Saturday 25th September

Our Open Morning will be taking place on Saturday 25th September and with a large number of visitors expected inevitably traffic congestion will be increased near the College, therefore students should arrive on foot if possible. **Please note that lessons on Open Morning will end at 1205hrs (instead of 1220hrs).** Students can be collected from boarding houses at 1230hrs. Please be aware that the vehicular access to Canterbury House will be locked until 1230hrs.

Considerate Travel

Please be reminded that the College car park is for staff and agreed visitors only. Dropping off and collecting your child in the car park can cause considerable congestion in Dunmow Road. We also politely request that parents that park in the surrounding roads do so with thought and consideration for the local community. Please obey any restrictions in place and we ask you not to park in an obstructive manner. However, we strongly encourage students to use a sustainable method of travel and walk or cycle to College wherever possible.



IMPORTANT DATES

Saturday 11th September
Yr 7 New Parents' Morning
HPF New Parents' Social event
(further details below)

Saturday 25th September
Open Morning (lessons finish at 1205)

Friday 15th October
Half term holiday commences
(students depart at 1540hrs)

CONTACT US:
General communications to: admin@hockerill.com
Absence communications to: absence@hockerill.com

Confirmatory PCR tests

Students with a positive LFD test result should self-isolate in line with the [stay at home guidance for households with possible or confirmed coronavirus \(COVID-19\) infection](#). They will also need to [get a free PCR test to check if they have COVID-19](#). Whilst awaiting the PCR result, the individual should continue to self-isolate. If the PCR test is taken within 2 days of the positive lateral flow test, and is negative, it overrides the self-test LFD test and the pupil can return to school, as long as the individual doesn't have COVID-19 symptoms.

Families First

For further details regarding Families First please [click here](#)

CURRICULUM NEWS

The PSHE curriculum including the Relationships and Sex Education programme

As part of your child's education at Hockerill we promote personal wellbeing and development through a broad Personal, Social, Health and Economic (PSHE) education programme. PSHE education is the curriculum subject that gives children the knowledge, understanding, attitudes and practical skills to live safe, healthy, productive lives and meet their full potential.

We would like to inform new parents of our PSHE curriculum, and to remind those in our existing community of the process for opting out of RSE. As you may be aware, PSHE is currently taught twice a cycle to years 7-11. From September, all years will undertake lessons on the following themes:

- Relationships and sex education (including British values, relationships, and sexual health).
- Health and wellbeing (including mental health and personal safety).
- Living in the wider world (including careers, personal finance, study skills and character and values education).

As of September 2020, Relationships and Sex Education and health education became statutory in all schools in the UK. At Hockerill RSE is about the emotional, social and cultural development of students, and involves learning about relationships, sexual health, sexuality, healthy lifestyles, diversity and personal identity. RSE focuses on giving young people the information they need to help them develop healthy, nurturing relationships of all kinds including:

- Families
- Respectful relationships, including friendships
- Online and media
- Being safe
- Intimate and sexual relationships, including sexual health

Our curriculum was written in collaboration with student and staff focus groups, student surveys, a review of the current curriculum, parental feedback and statistical analysis of local issues in Bishops Stortford. Our own student-led club SPECTRUM has also been instrumental in the preparation of the new RSE lessons, to ensure students are confident in our inclusivity ethos. We have worked closely with the PSHE Association and the Sex Education Forum, to ensure we cover a broad range of topics, that are essential to the development of our students. All PSHE teaching already takes place in a safe learning environment and is underpinned by the College's ethos and values.

Lessons are also complimented by a number of Safeguarding days, that this academic year have included talks from outside speakers on mental health and online gambling, and form part of our IB Enrichment programme, that has included speakers to discuss topics such as substance abuse and knife crime.

Parents have the right to request that their child be withdrawn from some of the sex education delivered as part of statutory PSHE. Parents can request this up to and until three terms before the child turns 16. After this point, if the child wishes to receive Sex Education rather than being withdrawn, the school will arrange this. Requests for withdrawal should be made by completing the Microsoft form using the link [here](#).

Further information regarding opting out can be found in our RSE policy on our website. We ask that you request withdrawal for each new academic year.

For more information a comprehensive overview of the curriculum can be found by using this [link](#):

The presentation covers the content of our PSHE curriculum for each year group. If you have any questions regarding PSHE at Hockerill, please contact me via perryj@hockerill.com

Miss J Perry

Head of PE, PSHE and Sport

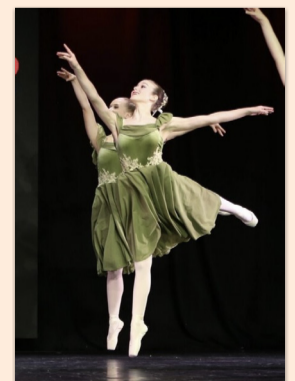
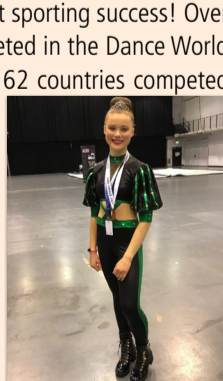
SPORT NEWS

Sporting success news!

Congratulations to two of our Hockerill students on their recent sporting success! Over the summer Esmé Lawson (Y11) and Lucy Troman (Y10) competed in the Dance World Cup for Team England and came away with multiple medals. 62 countries competed and our students were part of a very successful winning team, team England. Esmé received 1 gold medal, 3 silver medals and 1 bronze medal, and Lucy received three silver medals and a bronze medal.

Miss J Perry

Head of PE, PSHE and Sport



MUSIC LESSONS

Instrumental, vocal and music theory lessons start next week. Timetables are now displayed on Teams for students to view. Please can you ask your children to check their timetable regularly as lessons times frequently get updated, especially at the beginning of term. We look forward to seeing everyone next week.

HOCKERILL PARENTS AND FRIENDS

Social Evening and Supper by Candlelight

A reminder that it is our first Social Evening this Saturday from 7 - 9 pm at Host in Bishop's Stortford. All parents and teachers are welcome and especially those of new starters. Come and say hello - it'll be friendly and very informal. We hope to see you there!

On Friday 8th October, we will be reprising our 'Supper by Candlelight', with music by Hockerill's talented jazz musicians. Tickets are £15 each, to include a buffet main course, dessert and cheese, as well as a drink on arrival. Book your tickets via WisePay or contact HPF for more information (HPF@hockerill.com).

